



**Rosyth School**  
**Continual Assessment 1 2014**  
**Primary 5 Mathematics**

Name: \_\_\_\_\_

Register No. \_\_\_\_\_

Class: Pr 5 - \_\_\_\_\_

Date: 28<sup>th</sup> February 2014

Parent's Signature: \_\_\_\_\_

Total Time for Booklets A and B : 50 minutes

---

**PAPER 1**  
**(Booklet A)**

Instructions to Pupils:

1. Do not open this booklet until you are told to do so.
2. Follow all instructions carefully.
3. Shade your answers in the Optical Answer Sheet (OAS) provided.
4. You are **not** allowed to use a calculator
5. Answer all questions.

Section	Maximum Mark	Marks Obtained
Paper 1 (Booklet A)	20	

**\* This booklet consists of 6 pages (including this cover page)**

This paper is not to be reproduced in part or whole without the permission of the Principal.

Questions 1 to 10 carry 1 mark each. Questions 11 to 15 carry 2 marks each. For each question, four options are given. One of them is the correct answer. Make your choice (1, 2, 3 or 4). Shade the oval (1, 2, 3 or 4) on the Optical Answer Sheet.

(20 marks)

---

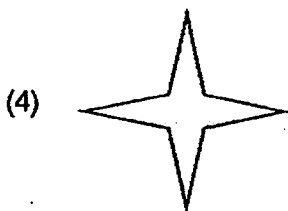
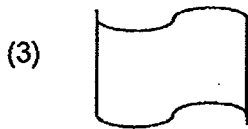
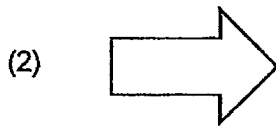
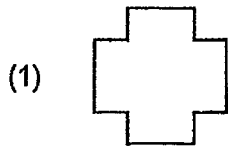
1. What is the value of the digit 7 in 675 238?
  - (1) 700
  - (2) 7 000
  - (3) 70 000
  - (4) 700 000
  
2. In 400.394 , what does the digit 9 stand for?
  - (1) 9 thousandths
  - (2) 9 hundredths
  - (3) 9 tenths
  - (4) 9 ones
  
3. What is  $40 \div 2\ 000$ ?
  - (1) 0.002
  - (2) 2
  - (3) 0.02
  - (4) 0.2
  
4. Which of the following is 960 000 when rounded off to the nearest thousand?
  - (1) 959 499
  - (2) 960 499
  - (3) 960 599
  - (4) 960 999

5. Arrange the following numbers from the largest to the smallest.

5 , 5.004 , 5.04 , 5.4

- (1) 5 , 5.4 , 5.04 , 5.004
- (2) 5.4 , 5 , 5.04 , 5.004
- (3) 5.004 , 5.04 , 5.4 , 5
- (4) 5.4 , 5.04 , 5.004 , 5

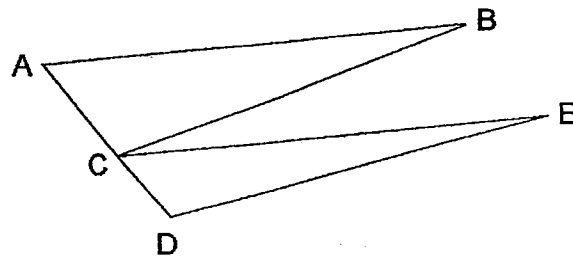
6. Which of the following figures has only one line of symmetry?



7. What is the perimeter of a square with sides 8 cm?

- (1) 16 cm
- (2) 24 cm
- (3) 32 cm
- (4) 64 cm

8. Which of the following are pairs of parallel lines?



- (1) AB and BC
  - (2) AB and CE
  - (3) BC and CE
  - (4) BC and DE
9. The value of  $3 + 5 \times 8 - 6 \times 3 + 2$  is \_\_\_\_\_.
- (1) 23
  - (2) 34
  - (3) 55
  - (4) 87
10. Which of the following has the same value as  $35 \times 36$ ?
- (1)  $3 \times 5 \times 3 \times 6$
  - (2)  $3 \times 5 \times 5 \times 6$
  - (3)  $5 \times 7 \times 3 \times 6$
  - (4)  $5 \times 7 \times 6 \times 6$

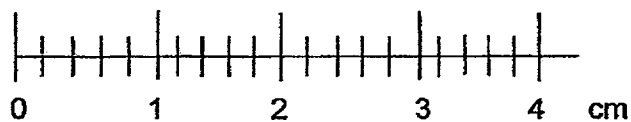
11. Which one of the following is the best estimate for  $73 \times 285$ ?

- (1) 14 000
- (2) 16 000
- (3) 21 000
- (4) 24 000

12. When a number is divided by 22, the quotient is 88.  
What is the quotient when the same number is divided by 8?

- (1) 11
- (2) 32
- (3) 242
- (4) 4

13. What is the length of the sticker shown below?



- (1) 2.1 cm
- (2) 2.2 cm
- (3) 3.1 cm
- (4) 3.2 cm

14. Judy uses the five letters of I, C, A, R and E to form a pattern. The first 12 letters are shown below. Which letter is in the 37<sup>th</sup> position?

I	C	A	R	E	I	C	A	R	E	I	C
---	---	---	---	---	---	---	---	---	---	---	---

- (1) C  
(2) A  
(3) R  
(4) E
15. Joan bought 12 cushions and 4 towels. She packed them into bags of 2 cushions and 1 towel. Each bag was sold at \$8.50 and the remaining cushions were sold at \$2.60 each. How much money did she receive from the sale of all the cushions and towels?
- (1) \$44.40  
(2) \$61.40  
(3) \$88.80  
(4) \$177.60

End of Booklet A



**Rosyth School**  
**Continual Assessment 1 2014**  
**Primary 5 Mathematics**

Name: \_\_\_\_\_

Register No. \_\_\_\_\_

Class: Pr 5 - \_\_\_\_\_

Date: 28<sup>th</sup> February 2014

Parent's Signature: \_\_\_\_\_

Total Time for Booklets A and B : 50 minutes

---

**PAPER 1**  
**(Booklet B)**

Instructions to Pupils:

1. Do not open this booklet until you are told to do so.
2. Follow all instructions carefully.
3. You are **not** allowed to use a calculator
4. Answer all questions.

Section	Maximum Mark	Marks Obtained
Paper 1 (Booklet B)	20	

**\* This booklet consists of 8 pages (including this cover page)**

This paper is not to be reproduced in part or whole without the permission of the Principal.

Do not write  
in this space

Questions 16 to 25 carry 1 mark each. Write your answers in the spaces provided.  
For questions which require units, give your answers in the units stated.

(10 marks)

16. Write in numeral:

Three million, six hundred and six thousand and twenty.

Ans: \_\_\_\_\_

17. Express 4.08 kg in grams.

Ans: \_\_\_\_\_ g

18. Find the value of  $81.09 \div 30$ .

Ans: \_\_\_\_\_

19. Uncle Happy sold 12 645 chocolate cookies last year. Express this number to the nearest hundred.

Ans: \_\_\_\_\_



Do not write  
in this space.

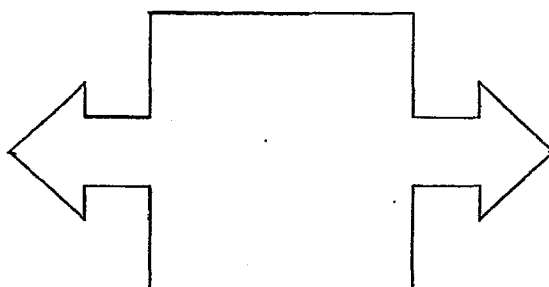
20. The population of Singapore recorded in June 2013, to the nearest hundred thousand was 5 400 000. What was the smallest possible whole number to give such an estimate?

Ans: \_\_\_\_\_

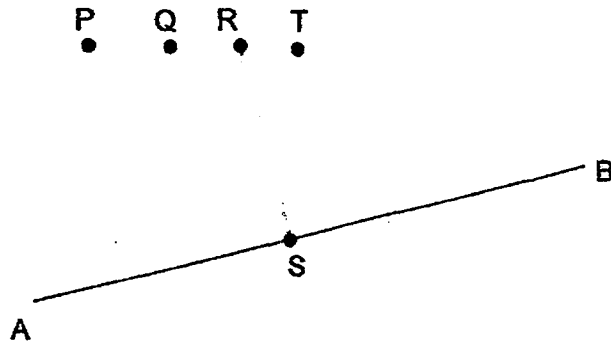
21. What is the perimeter of the square with an area of  $81 \text{ cm}^2$ ?

Ans: \_\_\_\_\_ cm

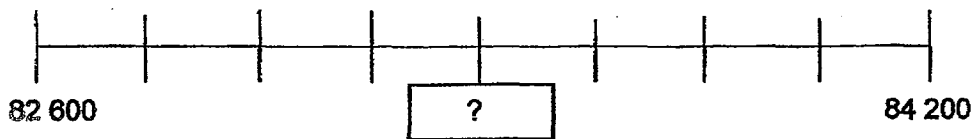
22. Draw a line of symmetry for the figure shown below.



23. Draw a line from Point S to Point P, Q R or T to form a perpendicular line with line AB.



24. What is the missing number in the box?

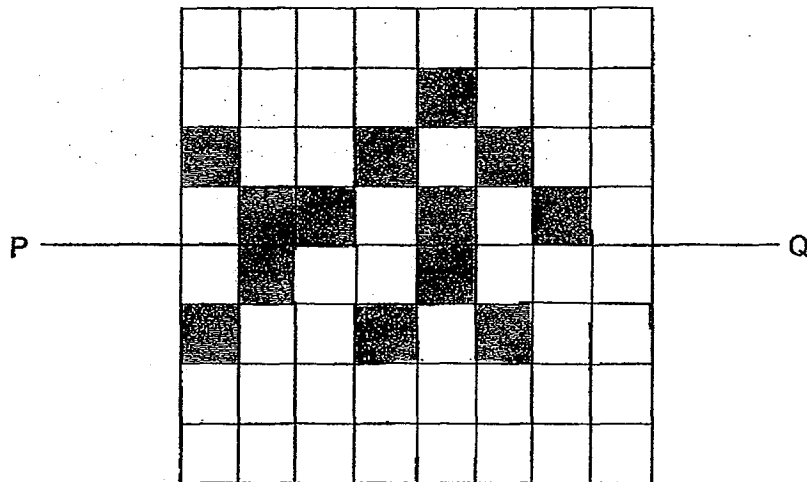


Ans: \_\_\_\_\_

(Go on to the next page)

Do not write  
in this space.

25. Line PQ is the line of symmetry. Shade 3 squares to make the figure below symmetrical.



Do not write  
in this space.

Questions 26 to 30 carry 2 marks each. Show your working clearly and write your answers in the spaces provided. For questions which require units, give your answers in the units stated.

(10 marks)

26. What is the missing number in the box?

$$1.6 + 2.4 - \boxed{?} = 0.5$$

Ans: \_\_\_\_\_

27. Express  $\frac{6}{7}$  as a decimal. Correct your answer to 2 decimal places.

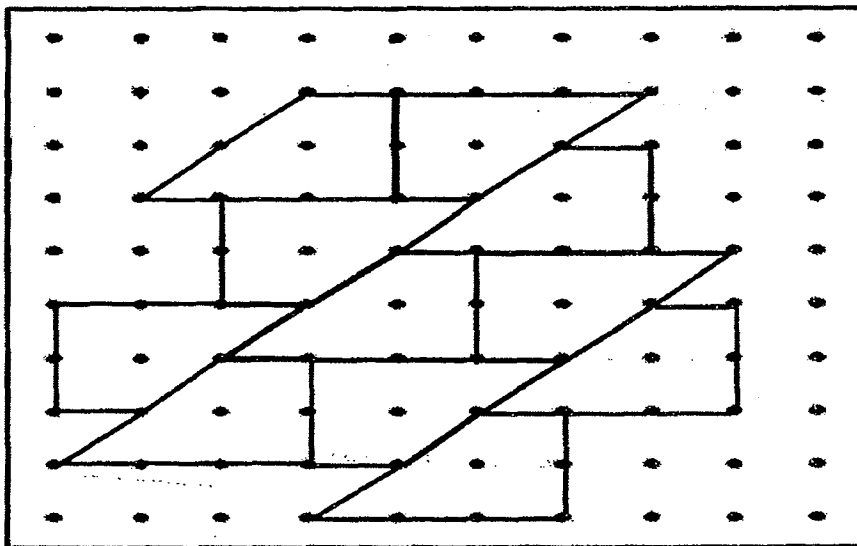
Ans: \_\_\_\_\_

28. The length of a rectangle is twice its breadth. If the perimeter of the rectangle is 72 cm, find its area.

Ans: \_\_\_\_\_ cm<sup>2</sup>

(Go on to the next page)

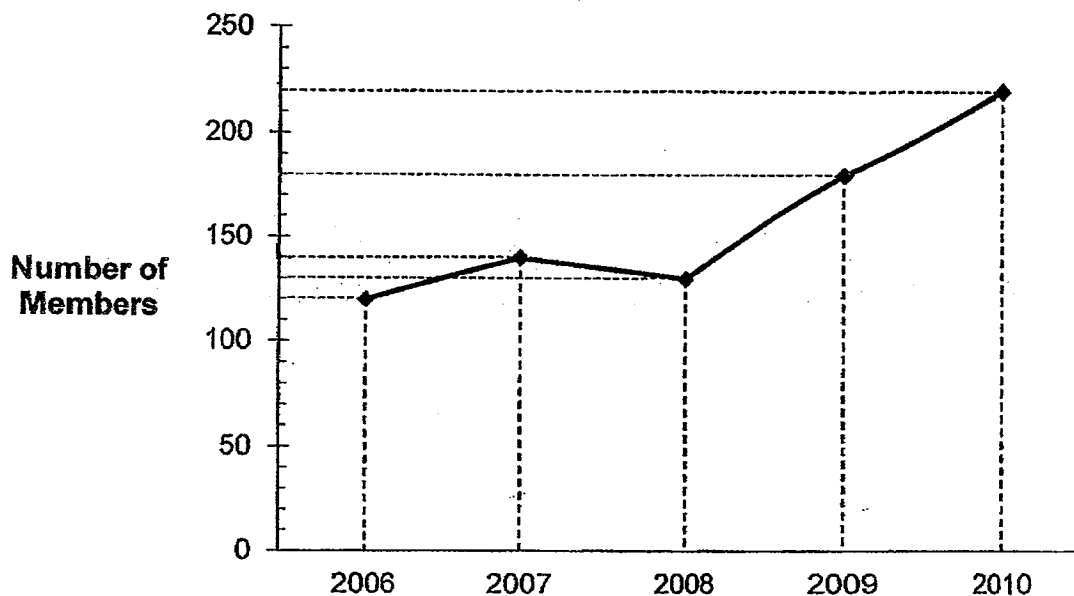
29. The pattern in the box shows part of a tessellation. Extend the tessellation by drawing two more unit shapes in the space provided in the box.



Do not write  
in this space.

Do not write  
in this space.

30. The graph below shows the membership of a photography club in 5 years.



- (a) During which one-year period was the increase in the number of members the greatest?

Ans: From \_\_\_\_\_ to \_\_\_\_\_

- (b) The increase in the number of members from 2010 to 2011 was twice the increase from 2009 to 2010. Find the new membership for 2011.

Ans: \_\_\_\_\_



**Rosyth School**  
**Continual Assessment 1 2014**  
**Primary 5 Mathematics**

Name: \_\_\_\_\_

Register No. \_\_\_\_\_

Class: Pr 5 - \_\_\_\_\_

Date: 28<sup>th</sup> February 2014

Parent's Signature: \_\_\_\_\_

Time: 1 h 15 minutes

---

**PAPER 2**

Instructions to Pupils:

1. Do not open this booklet until you are told to do so.
2. Follow all instructions carefully.
3. **Show your workings clearly** as marks are awarded for correct working.
4. Write your answers in this booklet.
5. You are allowed to use a calculator.
6. Answer all questions.

Questions	Maximum Mark	Marks Obtained
Q 1 to 5	10	
Q 6 to 13	30	

Section	Maximum Mark	Marks Obtained
Paper 1	40	
Paper 2	40	
Total	80	

**\* This booklet consists of 12 pages (including this cover page)**

This paper is not to be reproduced in part or whole without the permission of the Principal.

Questions 1 to 5 carry 2 marks each. Show your working clearly in the space provided for each question and write your answers in the spaces provided. For questions which require units, give your answers in the units stated.

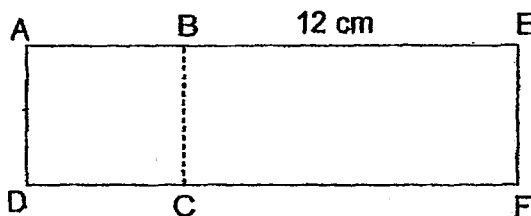
(10 marks)

Do not write  
in this space

1. Mdm Siti baked 200 muffins and put them in boxes of 6 muffins each. She sold each box at \$8 each. If she sold all these boxes, how much money did she make?

Ans: \_\_\_\_\_

2. The figure below is made up of a square ABCD and a rectangle BEFC. The perimeter of the square is 36 cm. What is area of the figure?



Ans: \_\_\_\_\_ cm<sup>2</sup>



3. Benches were placed side by side along a 170 m straight path. Every bench was 6 m long. How many more benches could be placed along the same path if the length of each bench is shortened to 4 m?

Do not write  
in this space

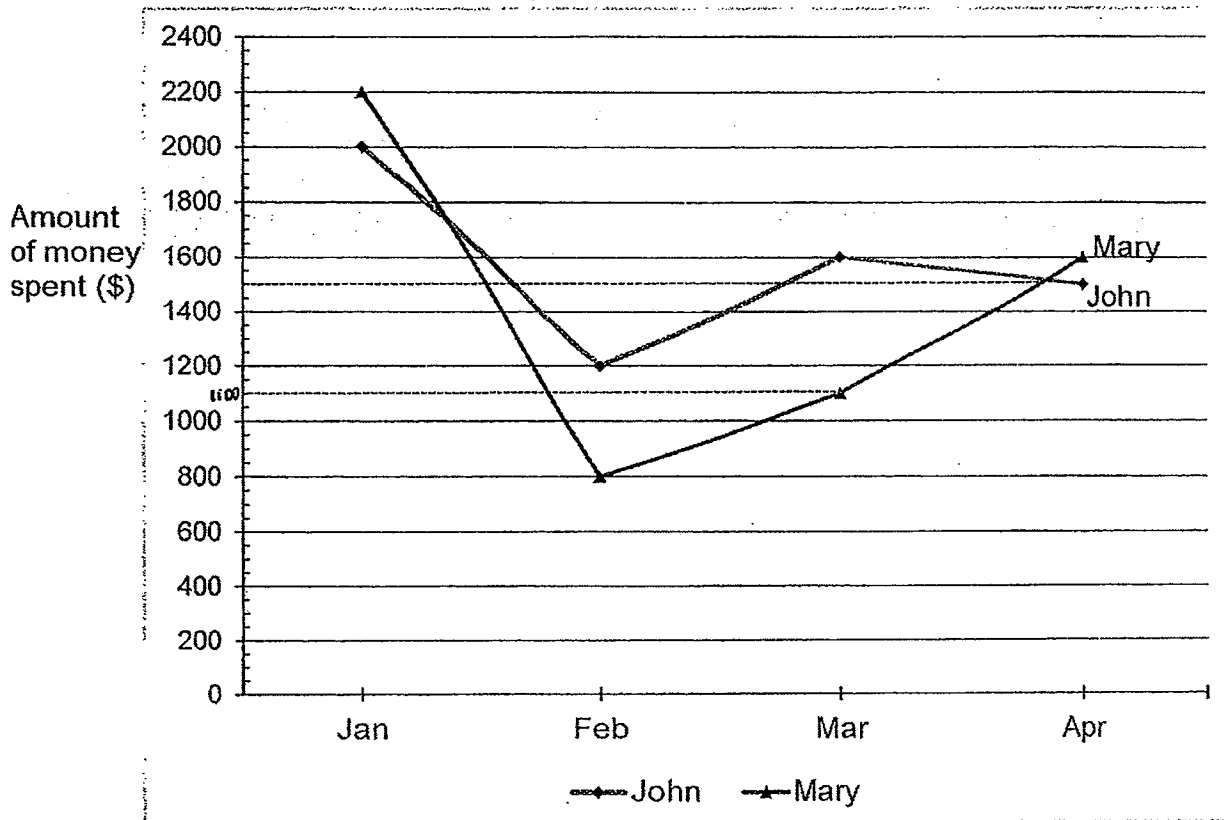
Ans: \_\_\_\_\_

4. The difference between 2 numbers is 360. If one number is thrice the other number, what is the bigger number?

Ans: \_\_\_\_\_

5. The graph below shows the amount of money spent by John and Mary in 4 months. Both of them earned \$3 000 a month and they saved the rest of the money after spending some of their own salaries each month. Who saved more money at the end of the 4 months?

Do not write  
in this space



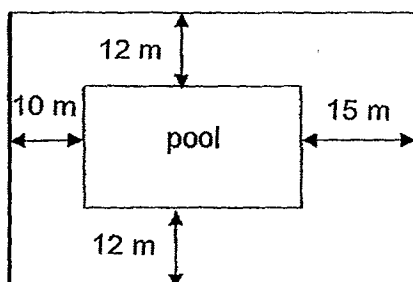
Ans: \_\_\_\_\_

Questions 6 to 13, show your working clearly in the space provided for each question and write your answers in the spaces provided. The number of marks available is shown in brackets [ ] at the end of each question or part-question.

(30 marks)

Do not write  
in this space

6. The diagram below is not drawn to scale. It shows a rectangular pool in the middle of a garden. The garden measures 55 m by 44 m. What is the area of the pool?



Ans: \_\_\_\_\_ (3m)

7. Mrs Tan baked less than 100 cookies and less than 100 cupcakes. She packed all the cookies and cupcakes into boxes. In each box, there were 6 cookies and 4 cupcakes. Each box was sold for \$12.

- (a) What was the maximum total number of cookies and cupcakes she baked?  
(b) How much money did she earn if she sold all the boxes?

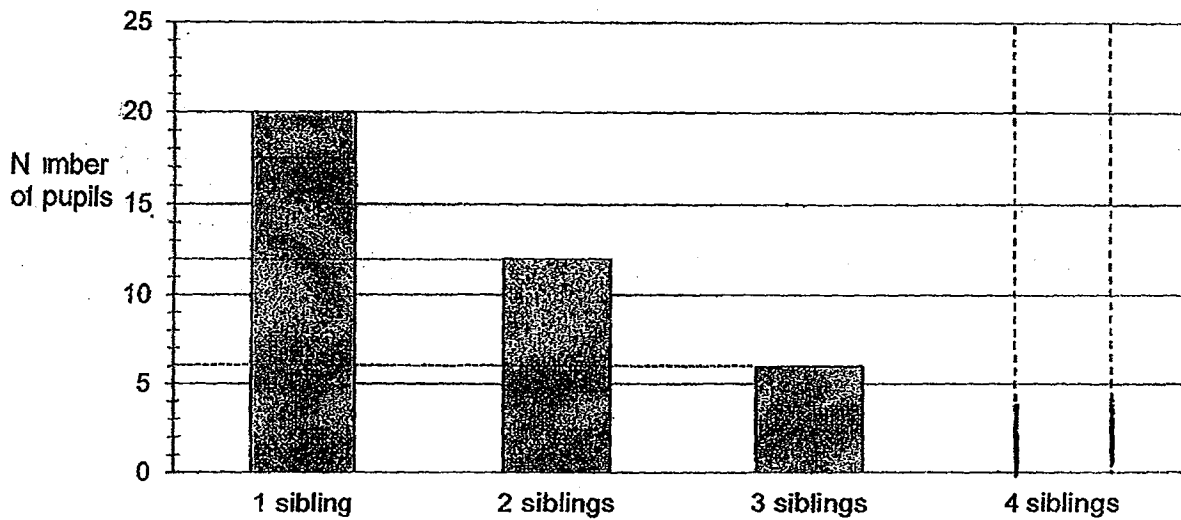
Do not write  
in this space

Ans: (a) \_\_\_\_\_ (2m)

Ans: (b) \_\_\_\_\_ (1m)

8. The graph below shows the number of siblings that each pupil has in the Class Alpha.

Do not write  
in this space



The number of pupils with 2 siblings is thrice the number of pupils with 4 siblings.

- (a) What was the total number of pupils in Class Alpha?
- (b) Draw the bar representing the number of pupils with 4 siblings in the bar graph above. You are not required to shade the bar.

Ans: (a) \_\_\_\_\_ (2m)

(b) (1m)

9. The parking charges at Sunshine Mall car park is:

1st hour or part thereof	\$2.50
Subsequent half an hour or part thereof	\$1.20

Mr Lim had parked his car at this car park from 1 p.m to 4.35 p.m. How much did he have to pay?

Do not write  
in this space

Ans: \_\_\_\_\_ (3m)

10. Robert wanted to buy 13 shirts but he found that he was short of \$60. He bought 8 shirts and found that he had \$15 left over. How much money did Robert have?

Do not write  
in this space

Ans: \_\_\_\_\_ (4m)

11. Jack and Mandy had some marbles. If Jack gave Mandy 150 marbles, both would have an equal number of marbles. If Mandy gave Jack 150 marbles, Jack would have thrice as many marbles as Mandy. How many marbles did each of them have?

Do not write  
in this space

Ans: Jack: \_\_\_\_\_  
Mandy: \_\_\_\_\_ } 4m



12. A notebook and 2 pencil case cost \$26.70. 2 notebooks and 3 pencil cases cost \$42.70.
- (a) Find the cost of one pencil case.
  - (b) How much do 3 notebooks and 4 pencil cases cost altogether?

Do not write  
in this space

Ans: (a) \_\_\_\_\_ (2m)

Ans: (b) \_\_\_\_\_ (3m)

13. The number of 20-cent coins is 5 times the number of 50-cent coins. The number of \$1 coins is half the number of 20-cent coins. There are 136 coins altogether. What is the total value of these coins?

Do not write  
in this space

Ans: \_\_\_\_\_ [5m]

**End of Paper**

# Answer Ke

**EXAM PAPER 2014**

**SCHOOL : ROSYTH**

**PRIMARY : P5**

**SUBJECT : MATHEMATICS**

**TERM : CA1**

Q1	Q2	Q3	Q4	Q5	Q6	Q7	Q8	Q9	Q10	Q11	Q12	Q13	Q14	Q15
3	2	3	2	4	2	3	2	2	4	3	3	2	1	1

**16)3606020**

**17)4080 g**

**18)2.703**

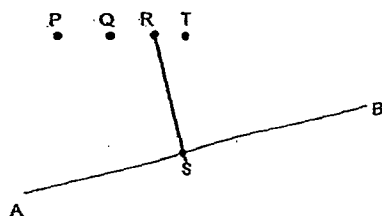
**19)12600**

**20)53500000**

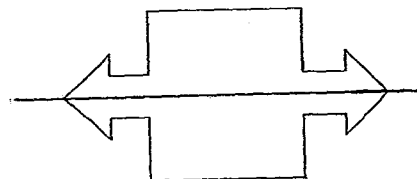
**21)36 cm**

**22)**

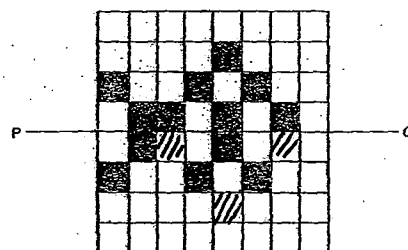
**23)**



**24)83400**



**25)**

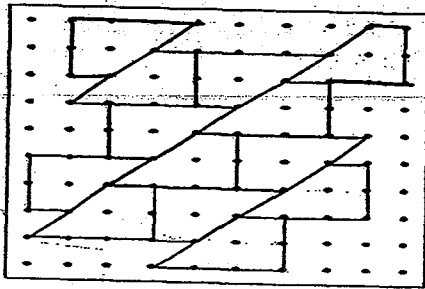


26)3.5

27)0.86

28)288 cm<sup>2</sup>

29)



30)a)2008 to 2009

b)300

## PAPER 2

---

1) No of boxes  $200 \div 6 = 33 \text{ R } 2$  muffins

Total  $33 \times 8 = \$264$

2)  $12 + 9 = 21 \text{ cm}$

$21 \times 9 = 189 \text{ cm}^2$

3)  $170 \div 6 = 28 \text{ R } 2$

$170 \div 4 = 42 \text{ R } 2$

$42 \text{ R } 2 - 28 \text{ R } 2 = 14$

4)  $360 \div 2 = 180$

$180 \times 3 = 540$

5) Mary

6) Length of pool  $\rightarrow 10 + 15 = 25 \text{ m}$

$55 \text{ m} - 25 \text{ m} = 30 \text{ m}$

Breadth of pool  $\rightarrow 12 \times 2 = 24 \text{ m}$

$44 - 24 \text{ m} = 24 \text{ m}$

Area of pool  $= 20 \text{ m} \times 30 \text{ m} = 600 \text{ m}^2$

7) a)  $100 \div 6 = 16 \text{ R } 4$

Cookies  $\rightarrow 16 \times 6 = 96$

Cupcakes  $\rightarrow 16 \times 4 = 64$

Total  $\rightarrow 96 + 64 = 160$

b)  $16 \times \$12 = \$192$

8) a)  $20 + 12 + 6 + 4 = 42$

b) 4 siblings



9)Time	cost
1pm-2pm	\$2.50
2pm-2.30	\$1.20
2.30-3pm	\$1.20
3pm-3.30	\$1.20
3.30-4pm	\$1.20
4pm-4.30	\$1.20
4.30-4.35	\$1.20

---

Total = \$9.20

10) 5 shirts  $\rightarrow \$15 + \$60 = \$75$

1 shirt  $\rightarrow \$15$

8 shirts  $\rightarrow \$15 \times 8 = \$120$

$\$120 + 15 = \$135$

11)  $2u = 150 \times 4 = 600$

$1u = 300$

Mandy  $\rightarrow 300 + 150 = 450$

Jack  $\rightarrow 300 + 150 + 150 + 150 = 750$

12)a)  $1n + 2p = \$26.70$

$2n + 3p = \$42.70$

$1n + 1p = \$16$

$1p = \$26.70 - \$16 = \$10.70$

b)  $2n + 3p = \$42.70$

$1n + 1p = \$16$

$3n + 4p = \$58.70$

13) No of

20c  $10u \rightarrow 8 \times 10 = 80$

50c  $2u \rightarrow 8 \times 2 = 16$

\$1  $5u \rightarrow 8 \times 5 = 40$

Value

20c  $80 \times \$0.20 = \$16$

50c  $16 \times \$0.50 = \$8$

Total  $\$40 + \$16 + \$8 = \$64$